

**PANCHO GUEDES**  
**EIN ALTERNATIVER MODERNIST / AN ALTERNATIVE MODERNIST**

**S AM - Schweizerisches Architekturmuseum / Swiss Architecture Museum**  
**30.09.2007 - 20.01.2008**

**PRESSE BILDER / PRESS IMAGES**



1 "Pancho Guedes", 2005  
Photo: Annett Bourquin

**AMANCIO GUEDES**

2 Amancio Guedes (Logo)  
© Pancho Guedes



3 "Manifesto painting", © Pancho Guedes



4 "Pancho and wife Dori at Airplane rooftop", 1953, in Lourenço Marques



5 "Leite Martins House", oder/ aka "Airplane House", 1951, in Lourenço Marques



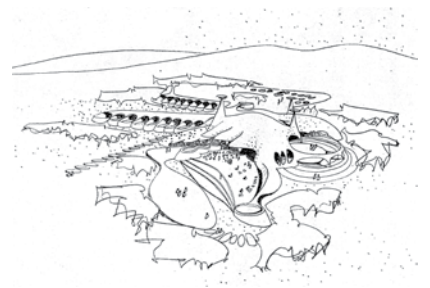
6 "Smiling Lion", 1956, in Lourenço Marques



7 "Smiling Lion", 1956, in Lourenço Marques



8 "Núcleo de Arte" (Modell), 1954



9 S. Martinho do Bilene Hotel, 1953, in Bilene

**PANCHO GUEDES**  
**EIN ALTERNATIVER MODERNIST / AN ALTERNATIVE MODERNIST**

**S AM - Schweizerisches Architekturmuseum / Swiss Architecture Museum**  
**30.09.2007 - 20.01.2008**

**PRESSE BILDER / PRESS IMAGES**



10 "Saipal Bakery", 1952,  
in Lourenço Marques



11 "Saipal Bakery" (Detail), 1952,  
in Lourenço Marques



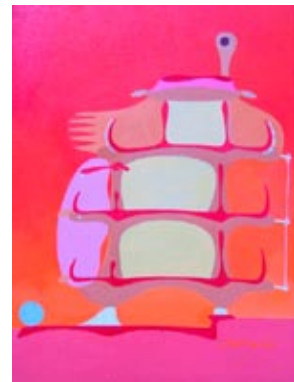
12 "Saipal Bakery" (Rückfassade/ back  
view), 1952, in Lourenço Marques



13 "S. Martinho do Bilene Hotel",  
1953, in Bilene, © Pancho Guedes



14 "Smiling Lion Inhabited Section", 2007  
© Pancho Guedes



15 "Smiling Lion", 2005  
© Pancho Guedes



16 "Núcleo de Arte", 1954,  
© Pancho Guedes



17 "Red House", 1969,  
© Pancho Guedes



18 "Red House", 1969,  
© Pancho Guedes

**PANCHO GUEDES**  
**EIN ALTERNATIVER MODERNIST / AN ALTERNATIVE MODERNIST**

**S AM - Schweizerisches Architekturmuseum / Swiss Architecture Museum**  
**30.09.2007 - 20.01.2008**

**PRESSE BILDER / PRESS IMAGES**



19 "Saipal section dreams its facades", 1981, © Pancho Guedes



20 "Saipal Nocturno", 1977, © Pancho Guedes



21 "Sagrada Família de Machava", 1964, in Machava



22 "Zambi Restaurant", 1958, in Lourenço Marques



23 "Swazi Zimbabwe House", 1960 -65, in Goedgedun



24 Ansichten aus der Ausstellung / Exhibition views, © Christian Hiller



25 Ansichten aus der Ausstellung / Exhibition views, © Christian Hiller



26 Ansichten aus der Ausstellung / Exhibition views, © Christian Hiller

**Kontakt / Contact:**

S AM Schweizerisches Architekturmuseum / Swiss Architecture Museum  
Julia Albani  
Steinenberg 7, Postfach 911  
CH - 4001 Basel  
Tel: +41 (0)61.261 14 13 / Fax: +41 (0)61.261 14 28  
press@sam-basel.org / www.sam-basel.org